

Page 1 of 1

Resource Name or #: Abacus, Konditori & Petit Carrousel

☐ Continuation ☒ Update

P2. Location: 230 South Lake Avenue

B10. Significance:

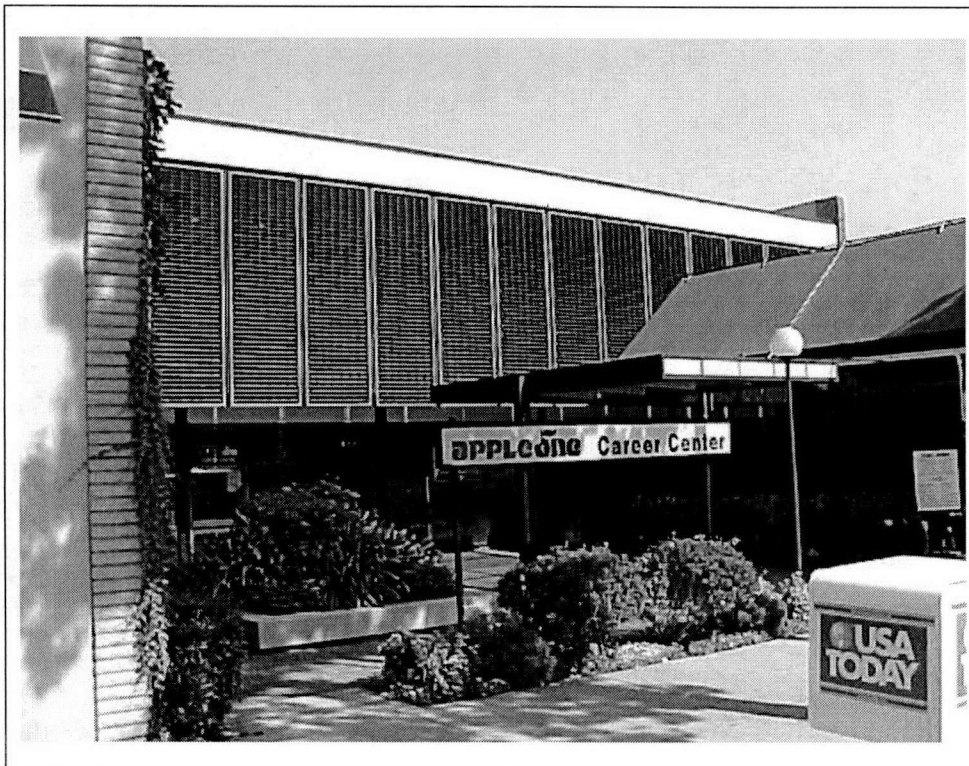
Although previously recorded in the state Historic Resources Inventory database as a 6Z1, indicating ineligibility for National Register listing or local designation, the former Abacus et al building appears to meet Criterion D for local landmark recognition. It is an unaltered example of the commercial use of the domesticated International Style, as practiced by local architect James Pulliam. Additionally the building contributes to a grouping of post World War II commercial buildings on South Lake Avenue.

Year of Construction: 1961

Architect: James G. Pulliam

Builder: Ted Tyler

P5b. Description/Date of Photo: View of the west elevation/ August 2004



P8. Recorded by: Leslie Heumann, PCR, 233 Wilshire Blvd., Suite 130, Santa Monica, CA 90401

P9. Date Recorded: August 30, 2000